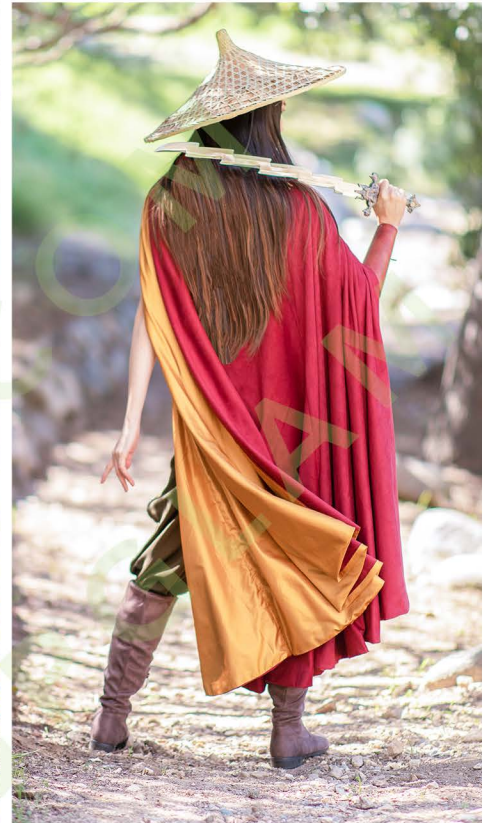


Raya Cloak Pattern



Description

This pattern is for a cross-front, high collar, wide neck, circle cloak (as seen on Raya from Raya and the Last Dragon). The left crosses over the right and the opening sits on the right side of the body. Pattern includes instructions for 3 different size cloaks.

Packet includes: 3 pattern pieces, cutting and sewing instructions.

Sewing level: Beginner to intermediate. You should have at least a basic understanding of sewing terms and concepts as the illustrations are limited and I do not go into excessive detail with the instructions.

Recommended fabrics: Faux suede, suedecloth, linen, light wool. Lining, brocade. Interfacing, felt. (Amounts on [page 8](#))

Notions: Thread, 3 large buttons, trim (optional)

Finished garment: 45" in length, 28" neckhole

Seam allowance used: 1/2"

A large, curved pattern piece for a cloak right extension. It has a wide, curved top edge and a narrower, slightly curved bottom edge. A small rectangular piece is attached to the left side. The pattern is labeled with 'B4' in a dashed box at the bottom left and 'A1' in a dashed box at the bottom center.

CLOAK RIGHT EXTENSION

NOTE: THIS IS NOT A COMPLETE PATTERN PIECE

Cut 1 of Fabric

Cut 1 of Lining

B4

A1

B3

A2

B2

A3

A4

B1

Cut 1 of Fabric
Cut 1 of Lining

NOTE: THIS IS NOT A COMPLETE PATTERN PIECE

CLOAK LEFT EXTENSION

CLOAK COLLAR

Cut 1 of Fabric

Cut 1 of Lining

Cut 1 of Interfacing

C1

C2

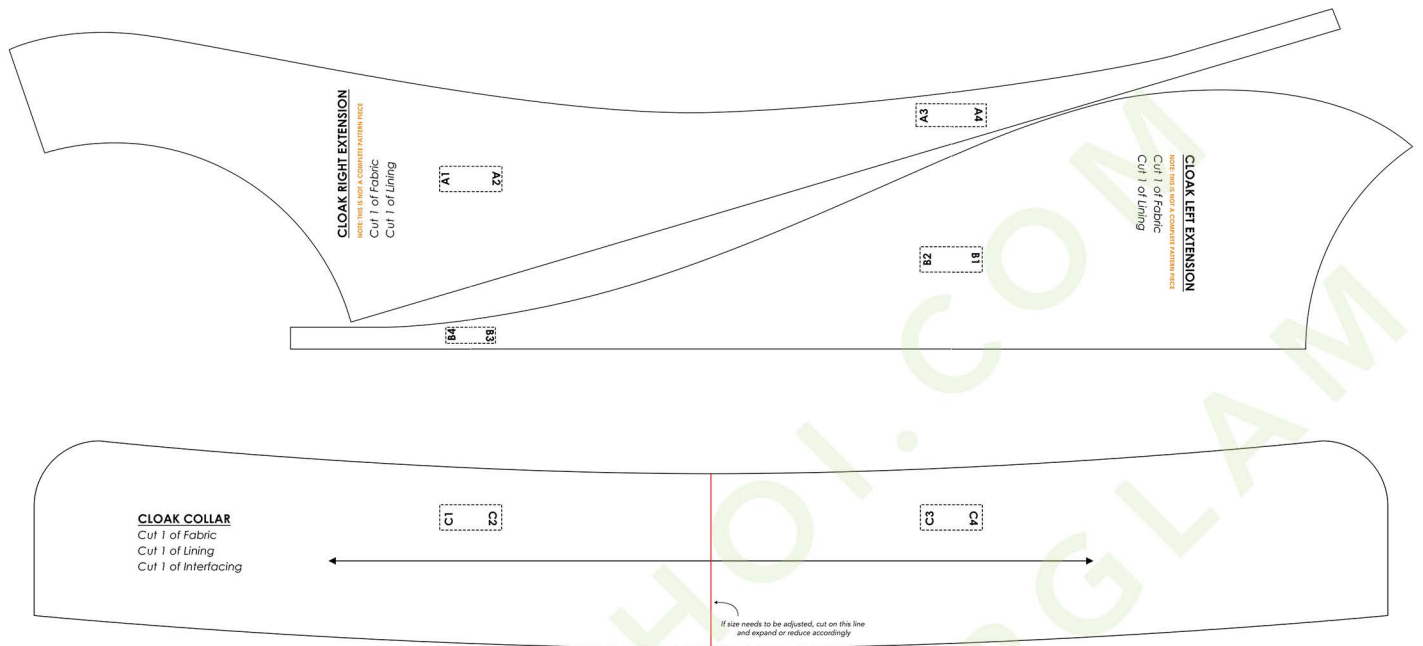
If size needs to be adjusted, cut on this line
and expand or reduce accordingly

C3

C4



Part 1: Assembling the Cloak Pattern Pieces



1. Print pages 2-7 at 100% (on 8.5x11 paper) with minimum or no margins.
2. Tape the edges of each paper together flush with no overlap, matching tabs
 - A1 to A2, A3 to A4 (Cloak Right)
 - B1 to B2, B3 to B4 (Cloak Left)
 - C1 to C2, C3 to C4 (Collar)
3. Cut out the pattern pieces on the solid black lines only. (If your printer did not print all the way to the edge, do your best to connect the lines from one page to the other.)
4. You should end up with 3 pieces:
 - a. **CLOAK RIGHT EXTENSION**
 - b. **CLOAK LEFT EXTENSION**
 - c. **CLOAK COLLAR**

***Important:** CLOAK RIGHT and CLOAK LEFT are NOT complete pattern pieces. These are extensions to the circle cloak parts. Please go to **Part 2: Cutting the Fabric** for instructions on how to use these pattern pieces.

Part 2: Cutting the Fabric

What you will need:

- Pattern pieces (Refer to [Part 1: Assembling the Cloak Pattern Pieces](#))
- Red Fabric (amounts below)
- Yellow Lining (amounts below)
- Interfacing or felt (32" x 6")
- Scissors
- Measuring tape
- Chalk or fabric pen

How much fabric do you need?

It depends on how big of a cloak you want to make. I have provided 3 options:

Cloak Size	Amount of Fabric	Amount of Lining
5/8 Circle Cloak	58" x 144" (4 yds)	58" x 144" (4 yds)
1/2 Circle Cloak	58" x 120" (3 1/3 yds)	58" x 120" (3 1/3 yds)
3/8 Circle Cloak	58" x 102" (2 5/6 yds)	58" x 102" (2 5/6 yds)

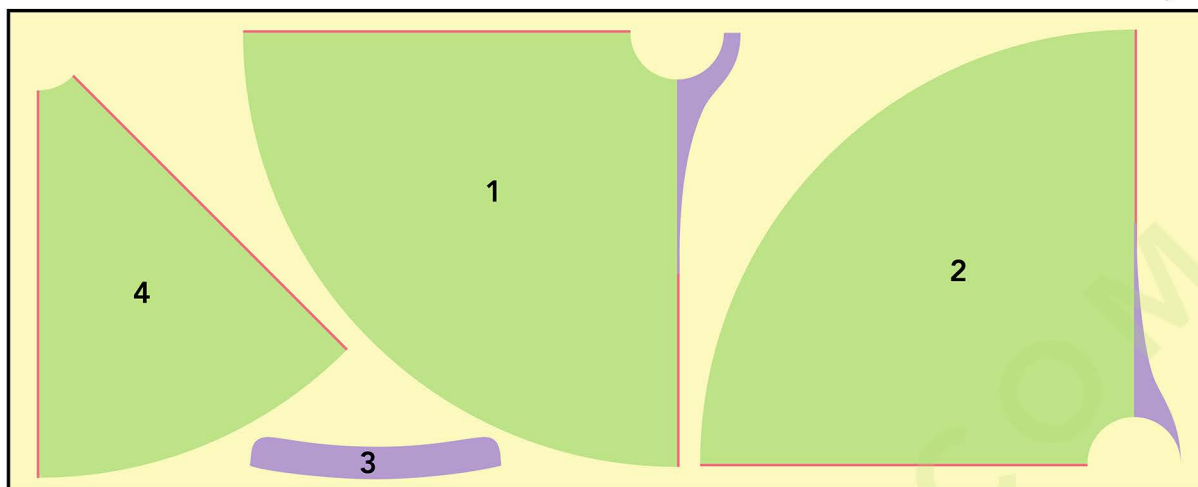
Note: The pattern pieces included are optimized for a 5/8 circle cloak. In theory it should still work with a 1/2 or a 3/8 cloak, but I have not tested it. So I cannot guarantee that the fit will be 100% accurate on a smaller cloak

Step 1: figuring out the layout of the pattern pieces

Once you have determined how big of a cloak you want to make and how much fabric you need, refer to the image on the next page for how all the pieces will fit on the fabric.

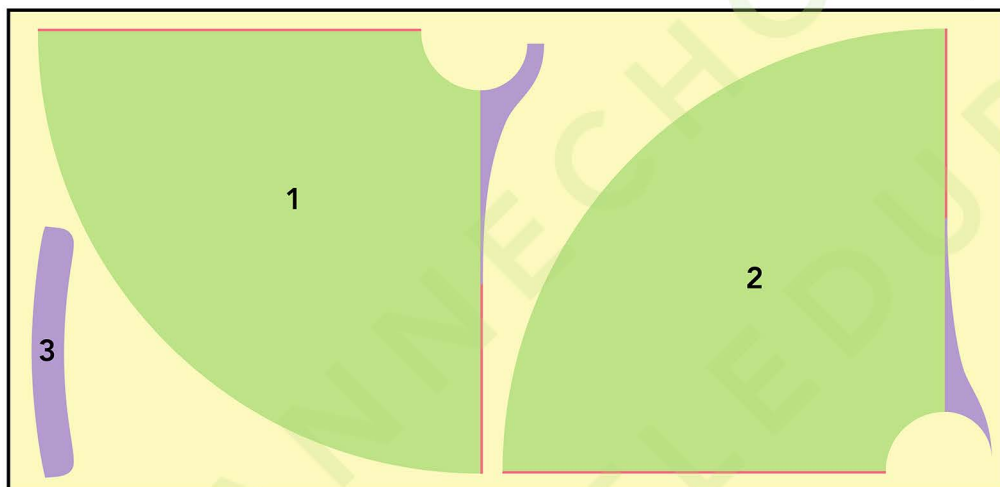
5/8 Circle Cloak

Fabric: 58" x 4 yds

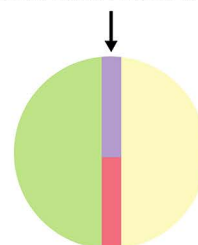


1/2 Circle Cloak

Fabric: 58" x 3 1/3 yds

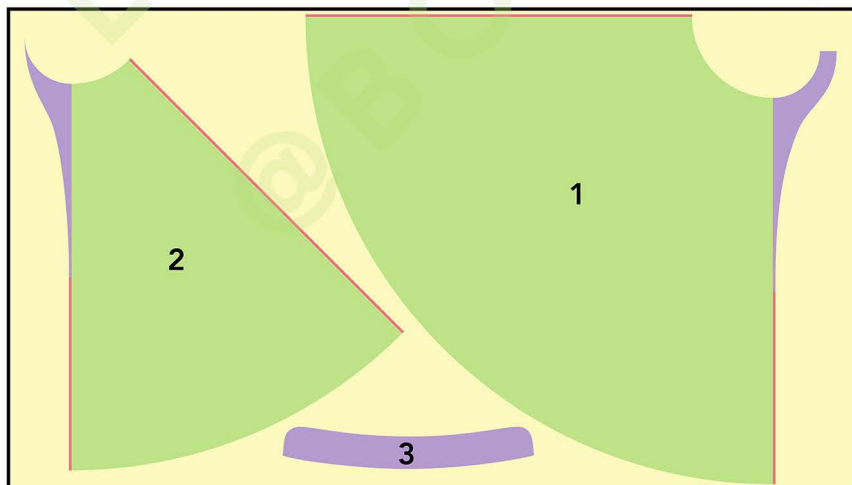


*Pattern blends into cloak seam allowance



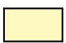



3/8 Circle Cloak

Fabric: 58" x 2 5/6 yds



LEGEND

- 1 - CLOAK RIGHT
- 2 - CLOAK LEFT
- 3 - CLOAK COLLAR
- 4 - CLOAK MIDDLE

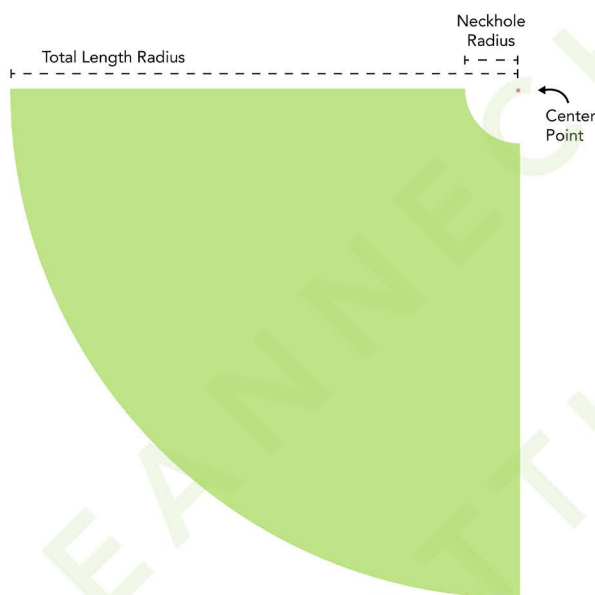
-  Right side of fabric / Wrong side of lining
-  Right side of pattern
-  Cloak pieces
-  Cloak seam allowance

Step 2: Marking out the cloak sections

You will need to mark out the circle cloak pieces yourself. Below are the radiuses for each size cloak.

Cloak Size	Total Length Radius	Neckhole Radius
5/8 Circle Cloak	52"	5 5/8"
1/2 Circle Cloak	53"	7 1/8"
3/8 Circle Cloak	56"	9 5/8"

Please note that these measurements only include seam allowance on the curved edges. They DO NOT include seam allowance on the straight edges. You will need to add that in the next step.



1. On the RIGHT SIDE of the fabric, determine a CENTER POINT for each piece of your circle.

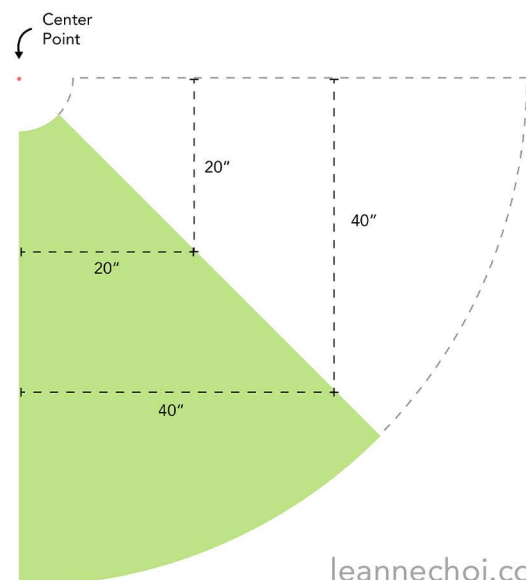
2. Measure and mark out the TOTAL LENGTH RADIUS from the center point.

3. Then measure and mark out the NECKHOLE RADIUS from the same center point.

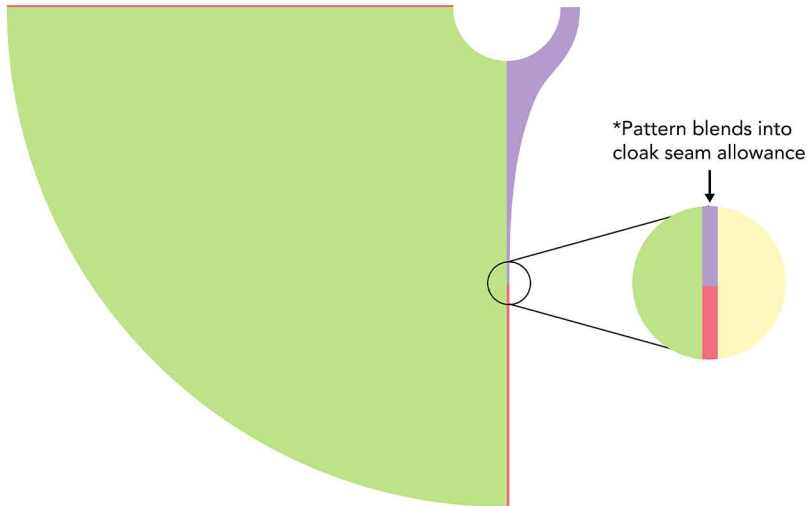
4. Add a 1/2" seam allowance to each straight edge.

5. (If applicable) The 1/8 circle pieces are marked at a 45° angle. To determine the angle:

- Measure and mark a point 20" and 40" from the center point as illustrated to the right.
- Then draw a line from the center point to the edge, connecting the dots.



Step 3: Adding the extension pieces



Add the extension pieces **ON TOP** of the seam allowance you marked out, matching the corner of the neckhole.

The extension piece already includes seam allowances, so the 1/2" of the pattern should blend into the 1/2" you added to the circle cloak piece

Step 4: Cutting out the fabric



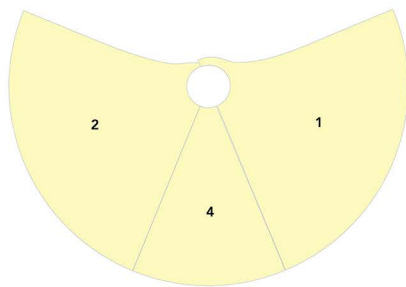
Cut cloak and extension as one piece.
Then use fabric as cutting guide for lining.



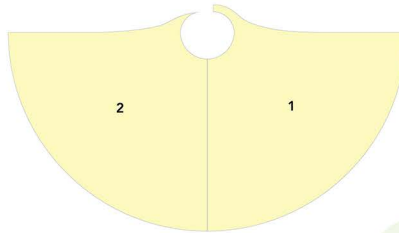
1. Cut the circle cloak and the extension as **ONE PIECE**. You should end up with one right side and one left side (and a middle if you are making a 5/8 cloak).
2. Now use your cut out fabric pieces as cutting guides (or you can repeat steps 1-3) on the **WRONG SIDE** of the lining.
3. Cut the collar piece from the remaining fabric and lining, as well as from the interfacing/felt.

Continue with **Part 3: Sewing the Cloak**

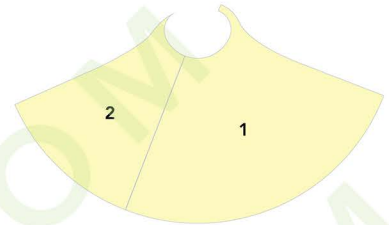
Part 3: Sewing the Cloak



5/8 Circle Cloak



1/2 Circle Cloak

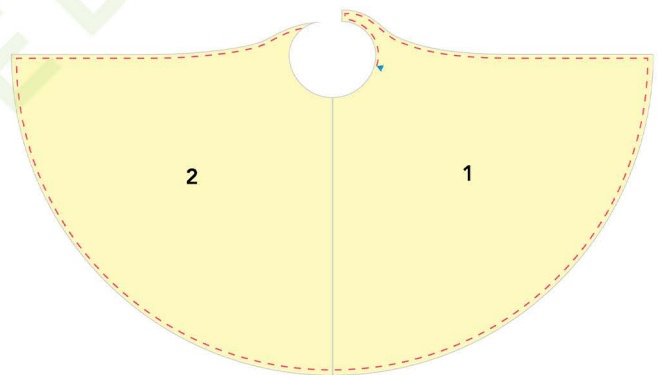
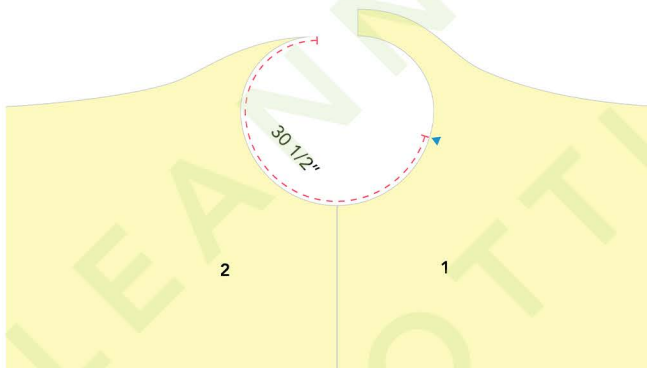


3/8 Circle Cloak

1. Sew straight edges of fabric together.

- For 5/8 cloak: sew CLOAK RIGHT to CLOAK MIDDLE along the straight edge. Then sew CLOAK LEFT to CLOAK MIDDLE along the other straight edge.
- For 1/2 & 3/8 cloak: sew CLOAK RIGHT to CLOAK LEFT along straight edge.

2. Repeat with lining pieces.

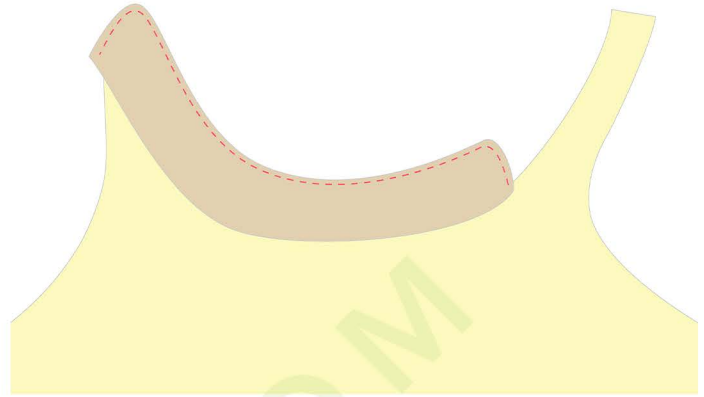
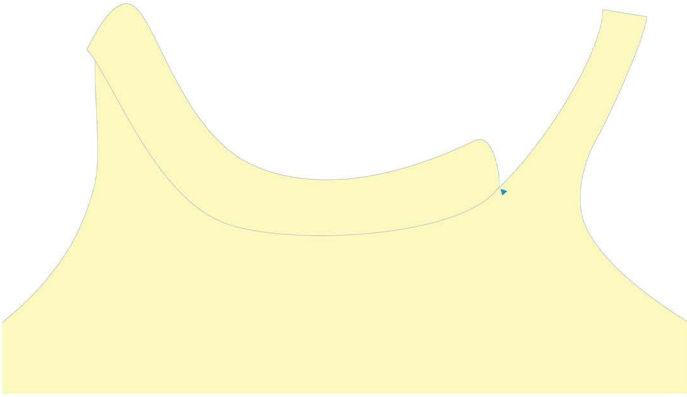


3. From the left edge, measure 30 1/2" and cut a small notch within the seam allowance. (This is the measurement of the lower edge of the collar + 1/2" seam allowance.)

4. With right sides together, sew lining to fabric along the right neckline from the notch, down both sides and the bottom edge.

5. Clip the corners, turn and press. Baste the remaining neckline together.

6. Apply collar interfacing or baste felt to wrong side of COLLAR fabric.



7. With right sides together, sew COLLAR to CLOAK, aligning the left edge and notch. (Don't forget to account for the seam allowance of the cloak that is now turned to the inside.)

8. With right sides together, sew collar lining to collar fabric along side and top edge.

9. Clip the corners, turn and press the collar.

10. On the inside, slip stitch the collar lining to cloak lining.

11. Optional: add trim around the neckline.



12. Add 2 buttons on the right side of the collar, and 2 horizontal buttonholes on the left side of the collar.

13. Also add a button hole to the right cloak extension, and a button on the inside of the cloak.